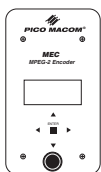
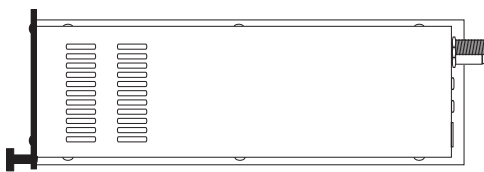


## MEC MPEG-2 Encoder

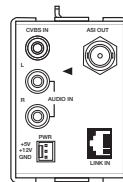
- 2RU modular design with low power consumption.
- Analog composite video input in NTSC/PAL format.
- 4:2:0 MP@ML video compression from 2.5 to 15 Mbps.
- Analog stereo audio input.
- MPEG-1 layer2 or Dobby Digital (AC3) audio compression.
- ISO/IEC 13818-1 PAT and PMT tables with Single Program Transport Stream (SPTS) output transport stream.
- Local control via front panel display and keys.
- Remote control via supplied utility.



Front View



Side View



Rear View

## Specifications

### VIDEO INPUT

**Input Interface**  
**Signal** Composite (NTSC / PAL)  
**Connector** RCA Jack (Yellow)  
**Level** 1 Vp-p, 75 Ohm unbalanced

### Encoding

**Type** MPEG-2 MP@ML  
**Supported Resolution** 720 x 480 (NTSC)  
 720 x 576 (PAL)  
**Frame Rate** 29.97 (NTSC)  
 25 (PAL)

### AUDIO INPUT

**Input Interface**  
**Signal** Stereo  
**Connector** RCA Jack (Red, White)  
**Level** 2Vrms max.

### ENCODING

**Type** MPEG-1 Layer 2 or Dolby Digital (AC3)  
**Sampling Rate** 32 / 44.1 / 48 KHz  
**Mode** MPEG-1 Layer 2: Stereo / Joint Stereo /  
 Dual Channel / Single Channel  
**Bit Rate** MPEG-1 Layer 2: 32 to 384 Kbps  
 Dolby Digital (AC3): 128 to 448 Kbps

### OUTPUT

**Output Interface** DVB-ASI  
**Connector** BNC  
**Level** 800 mVpp Nominal, 75 Ohm

### MULTIPLEX

**Type** ISO/IEC 13818-1 PAT and PMT tables with  
 Single Program Transport Stream (SPTS)  
**Bit Rate** Up to 19.2 Mbps

### CONTROL

**Local Operation** 8x2 LCD Display & Five front control keys

### Remote Operation

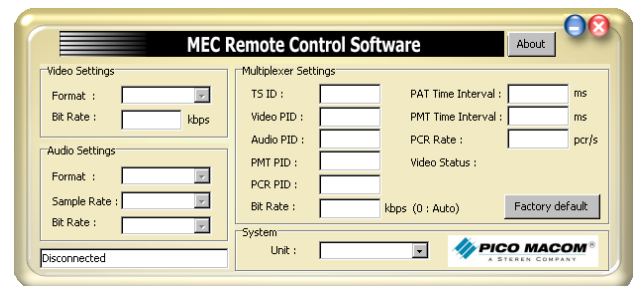
**Connector** (PC) RS232 (UNIT) RJ-11  
**Interface** Supplied Utility

### Power Consumption

12V / 0.486A  
 5V / 0.760A

### MECHANICAL

**Dimension** 2"x 3.5"x 10"(52.8 x 88 x 254 mm)  
**Weight** 1.6 lbs (0.726 kg) approx

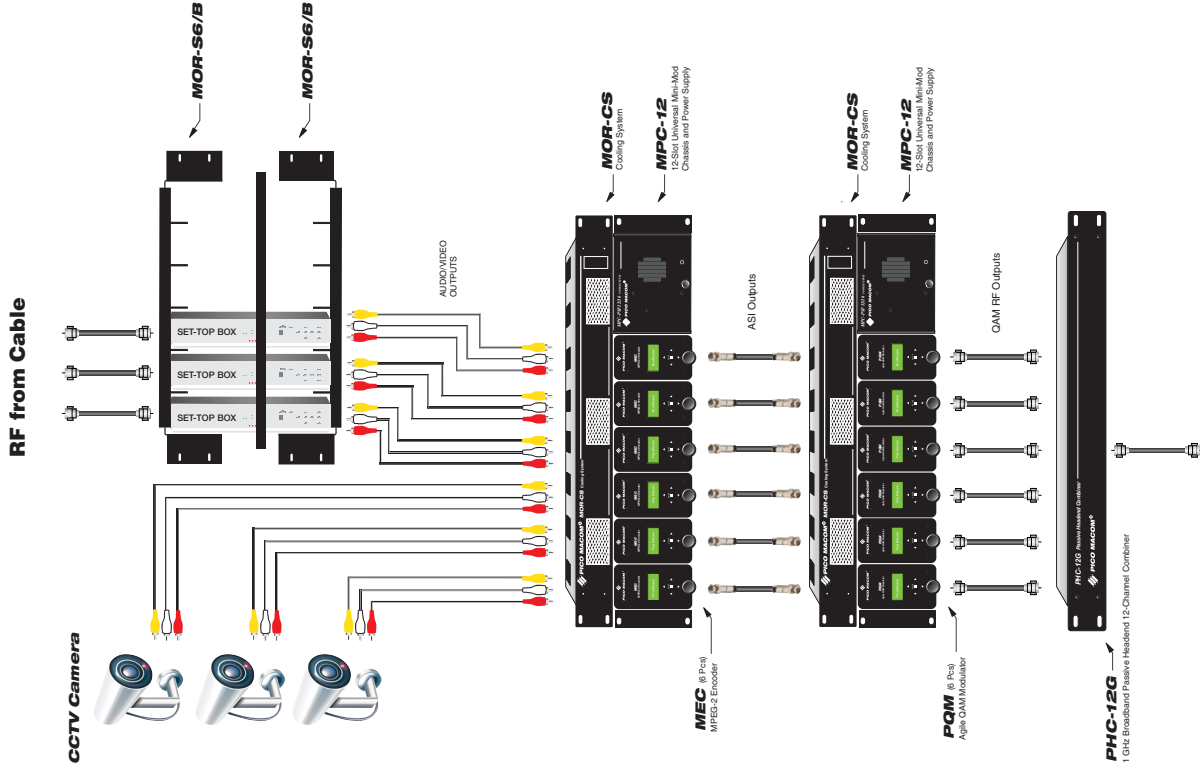
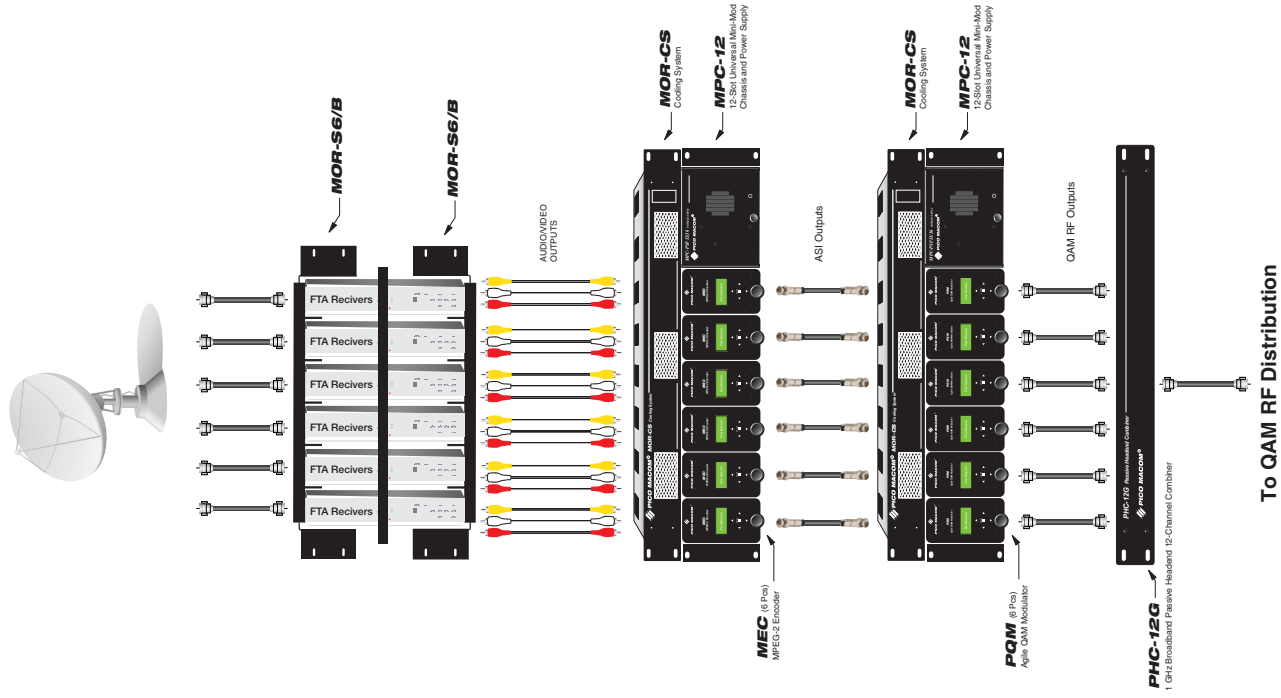


MEC Remote Control Software

**MEC** MPEG-2 Encoder

Specifications Subject to Change Without Notice © Copyright 2010 Pico Macom, Inc. Rev. 02/10

# Application Diagrams



Specifications Subject to Change Without Notice © Copyright 2010 Pico Maccom, Inc. Rev. 02/10

CONTACT US 858.546.5050

6260 Sequence Drive San Diego, CA 92121  
Toll Free: 800-421-6511 Toll Free: 800-421-6511 Fax: 858-546-5051

www.picomac.com